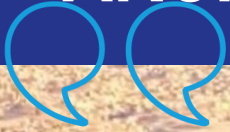




FRENCH DELEGATION

FRENCH-SAUDI ARCHITECTURE DAYS - 2023



Saudi Arabia
Riyadh
From October 30th
to November 2nd 2023



BUSINESS FRANCE

Business France is the national agency supporting the international development of the French economy, responsible for fostering export growth by French businesses, as well as promoting and facilitating international investment in France.

It promotes France's companies, business image and nationwide attractiveness as an investment location, and also runs the VIE international internship program. Business France has 1,500 personnel, both in France and in 58 countries throughout the world, who work with a network of partners.

Since January 2019, as part of the reform of the state support system for exports, Business France has given private partners responsibility for supporting French SMEs and mid-size companies in the following markets: Belgium, Hungary, Morocco, Norway, the Philippines and Singapore.

For further information, please visit: www.businessfrance.fr
[@businessfrance.fr](https://twitter.com/businessfrance.fr)





AFEX

Paris

Mr. Reda Amalou
AFEX
President
afex@afex.fr
+ 33 6 16 11 76 76



**Ms Madeleine
HOUBART**
AFEX
Secretary General
houbart@afex.fr
+ 33 6 80 08 34 05



AFEX and its members are very happy to be back in Saudi Arabia for the third time in 3 years.

The country that we have discovered arouses an enthusiasm among French architects that cannot be denied.

The architectural ambition displayed by Saudi decision-makers keen to develop their country makes us very confident in the future of the projects we wish to build together.

We observe with interest the urban and architectural projects experimented in the kingdom and wish to participate in the reflection and action that guides them. The importance of Saudi Arabia at the regional level encourages us to create an exemplary and lasting cooperation there.

This is why AFEX and Saudi Arabia are building together a series of projects which range from welcoming young Saudi architect interns into French architectural agencies to the eventual installation of an agency representing French architects in Riyadh, based on the Afalula successful model.

With the support of our very active French embassy and of our Saudi partners from the Ministry of Culture, we wish to move forward together on very concrete cooperation. This is about building the future of our cities and our planet. French and Saudi can do it together.

Madeleine HOUBART
AFEX Secretary General

Réda AMALOU
AFEX President

WORD FROM THE AMBASSADOR OF FRANCE TO THE KINGDOM OF SAUDI ARABIA



The construction sector has been a pillar of the Saudi economy for more than 30 years, and it has become more crucial with the implementation of the Saudi Vision 2030; this ambitious vision that aims to modernize and develop the country's social and tourism infrastructure, while preserving its cultural and natural heritage.

Since the launch of the Saudi Vision 2030, the Kingdom has unveiled real estate projects worth \$104 billion. These projects include the construction of over 555,000 residential units, more than 275,000 hotel rooms, and more than 4,3 million square meters of commercial space. They present great opportunities for the French companies seeking new partners and business ventures in Saudi Arabia. Moreover, The Kingdom's population is estimated to grow, leading to an increased demand for housing in the coming decades.

France has been and will remain a strategic partner to the Kingdom in various sectors, including energy, smart cities, tourism, hospitality, art and culture, archaeology and heritage, agriculture, health, training and many more. Both countries share a common vision of sustainable and eco-friendly development. The exceptional French Saudi cooperation for Al Ula, Saudi Arabia's first UNESCO world heritage site, underscores the strong relationship between France and Saudi Arabia. The frequent bilateral high-level visits and meetings establishes the strength of the strategic partnership between our countries and the shared commitment to enhance it, driven by the impetus of the Saudi Vision 2030.

This partnership was a focal point of discussions during the visit of HRH the Crown Prince Mohammed bin Salman in June 2023 to France. French architects, urban planners, and landscaping agencies have a global reputation for excellence and sustainability, having played pioneering roles in numerous international projects ranging from ancient prominent styles to modern and contemporary architecture. Several French companies have already established themselves in the Kingdom, and Business France, the national agency supporting the international development of the French economy, encourages more French companies to participate in the unprecedented transformation that the Kingdom is witnessing and to show their support for hosting Expo 2030 in Riyadh.

I am delighted to introduce a delegation of companies, members of the French Overseas Architects Association - AFEX, led by Mrs. Madeleine HOUBART, AFEX Secretary General and Mr. Reda Amalou, AFEX's President. The members of this delegation are visiting Saudi Arabia to explore opportunities and are committed to developing strong and long-term partnerships. AFEX is a non-profit association with over 200 members of architecture firms, engineers, planners, landscape architects and manufacturers. Long live the French Saudi partnership!

HE Ludovic POUILLE
Ambassador of France to Kingdom Saudi Arabia



French Delegation

Architects

• ABA-WORKSHOP -----	6
• AND STUDIO -----	7
• ARCHETYPE GROUP -----	8
• ARCHITECTURESTUDIO -----	9
• ARTE CHARPENTIER -----	10
• CHAIX ET MOREL -----	11
• AW2 -----	12
• COLDEFY -----	13
• ROUGERIE + TANGRAM -----	14
• LOCAL -----	15
• MAISON ÉDOUARD FRANÇOIS -----	16
• MICHEL RÉMON & ASSOCIÉS -----	17
• ORO -----	18
• PCA STREAM -----	19
• RICHEZ ASSOCIÉS -----	20
• S&AA - PATRICK SCHWEITZER & ASSOCIÉS -----	21
• STELLA AMAE -----	22
• UNANIME -----	23
• ZUO -----	24

Partner

• MAF - MUTUELLE DES ARCHITECTES FRANÇAIS -----	25
-------------------------------------------------	----

Landscape Designer

• STUDIO FALAJ -----	26
----------------------	----

Engineers

• TERRELL GROUP -----	27
• SETEC -----	28
• VS-A -----	29

Lighting Companies

• BLACHERE ILLUMINATION -----	30
• BOA LIGHT STUDIO (Lighting designer) -----	31
• G.H.M-ECLATEC -----	32
• SELUX -----	33

Industrial

• PLÂTRE.COM -----	34
--------------------	----



ABA WORKSHOP

Paris
France

Shanghai
China

Ms. Nelly BUSSAC
CEO
nelly@aba-workshop.com
+ 33 6 77 24 76 70

Mr. Loïc BRENTERC'H
COO
loic@aba-workshop.com

www.aba-workshop.com/

Lyon Airport car parking (Vinci
Airports)
2000 parking spaces 2022 23
MEuros

Marseille Provence Airport car
parking x 3 6250 parking spaces
2025 50 MEuros

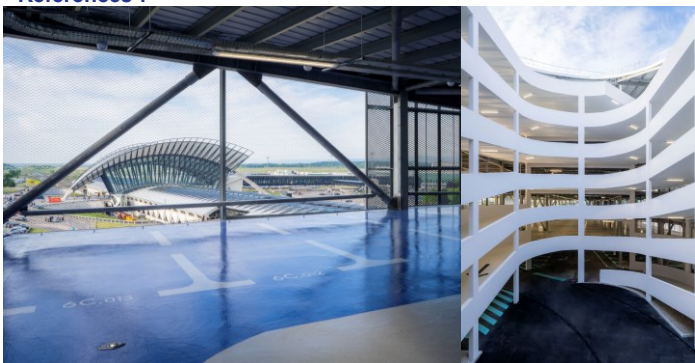
SMART CITIES Eco construction



ABA-WORKSHOP is an architecture and engineering consultancy experienced in dynamic, low-carbon, eco-friendly mobility management in France and throughout Europe. In less than 10 years, it became specialized in the design, construction and rehabilitation of car parks - 4,000,000m² designed/built/rehabilitated facilities that provide over 100,000 car spaces. Through its unique understanding of parking facilities, ABA is a consultancy that develops your mobility strategy. Their approach identifies present uses and anticipates future requirements to provide contextual, energy conscious solutions.

A comprehensive understanding of mobility enables ABA to anticipate alternative functions for parking facilities (transformation, reversibility, circular economy). It designs innovative, evolutive car parks that can adapt to future requirements. For the user experience to include comfort and well-being, ABA designs a facility from its environmental integration through to bespoke visual identity that it alone undertakes in France. It designs practical, aesthetic facilities that are the interface between the user and mobility, the transition and interpretation of the future hybrid means of travel. ABA provides services within specialized teams of mobility consultancies, international steel contractors and international manufacturers.

Références :





SMART CITIES Eco construction

AND STUDIO

Paris
France

Shanghai
China

Mr. Duccio CARDELLI
Partner
dc@andstudio.net
+ 33 6 17 01 34 01

Mr. Wang NING
Partner
nw@andstudio.net

www.andstudio.net

Introduction : Urban planning and architecture are mirrors of their era, reflecting its zeitgeist, societal norms, and cultural customs. Our mission is to establish a **hub for collaboration and dialogue**, fostering essential connections among professionals to consistently generate contemporary ideas. Our goal is to **mold the future by bridging diverse communities**, facilitating their integration, and pursuing a high quality of life while nurturing knowledge and education among younger generations, all while staying at the forefront of emerging technologies.

At the core of our firm's mission lies a **commitment to environmental protection**. Our primary focus revolves around diminishing energy consumption, minimizing production waste, and optimizing resource management, particularly in the realm of water conservation.

Description of your expertise : our proficiency lies in the development of **Smart Cities**, based on **cutting-edge scientific research in the areas of environmental sustainability, climate change mitigation, efficient water management, and the dissemination of knowledge and awareness**. Our portfolio encompasses a diverse array of projects, including startup accelerators, cultural hubs, educational facilities, residential complexes, and innovative agricultural spaces like vertical winter gardens. Every component within our Smart Cities is meticulously constructed using eco-friendly methods, prioritizing the utilization of local materials and expertise, with a shared commitment to minimizing resource consumption.

References:

YANQUI LAKE

Beijing, China
Smart City
Under Construction



YANGTZE RIVER

Shanghai, China
Smart City
Built



CHENGDU TIANFU

Chengdu, China
Cultural Center
Built



ARCHETYPE GROUP

Mr. Guillaume Crouzet

Business Development
Director
Guillaume.crouzet@archetype
-group.com
+ 33 6 60 08 65 76

www.archetype-group.com



Archetype Group is a leading international construction consultancy company, we are shaping buildings that last with a full range of consulting services: Architecture & Master Planning, Building Engineering, Project & Cost Management.

Since 2002, Archetype Group has been working on over 1,500 projects in 50 different countries. With a thousand of collaborators on four continents, we have showcased our expertise, our experience, and our knowledge at the service of hospitality, real estate and industrial projects.

Archetype reality is the preferred partner for real estate and hospitality players. It brings best-in-class services for developers, constructors, and brands. Archetype reality focuses on four main sectors: hospitality, mixed-use high-rise, commercial & retail, and healthcare.

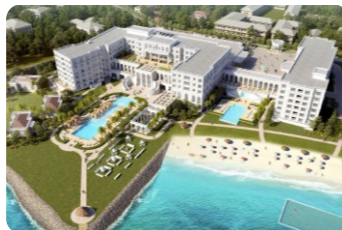
Archetype industry serves the most renowned companies in industry and manufacturing. Archetype Industry focuses on pharmaceuticals & cosmetics, food & beverage, chemicals, and advanced technologies & data centers.

archetype _y is a new integrated architecture signature studio that combines feasibility with creativity, delivering cutting-edge experiences that can meet or go beyond our clients' ambitions.

Archetype Group has already worked on several projects in Saudi Arabia and has recently created a joint venture with local company Hesco to better serve its Saudi clients.



MahaNakhon Tower
Thailand



Fairmont Hotel
Djibouti



architecturestudio

ARCHITECTURESTUDIO

Paris
France

Roueïda Ayache

Partner Architect

+33 6 85 01 26 17

r.ayache@architecturestudio.fr

www.architecturestudio.fr

Introduction :

Founded in 1973 in Paris, Architecturestudio is an international practice based in Paris, Shanghai, Zug (Switzerland) and Abidjan. It brings around 13 partner architects a cosmopolitan team of 150 architects, urban, landscape and interior designers.

Description of our expertise :

Nourished by a broad international experience, Architecturestudio's future-oriented design approach is based on :

- Plural understanding of the various contexts to design the resilient world of tomorrow
- Environmental awareness to respond to the 21st century major challenges
- Expertise in complex projects using BIM and parametric design tools
- Significant know-how in regenerating the architectural heritage
- Plural fields of expertise (Cultural, Tourism, Hospitality, Healthcare, Education, Offices, Housing and urban design)

Among Architecturestudio's major achievements are the European Parliament (Strasbourg), the Arab World Institute (Paris), the Eco district of Park Marianne (Montpellier), Onassis Cultural Centre (Athens), the public realm design of Lusail City (Qatar), Bahrain National Theatre, Amman Rotana Hotel (Jordan), Jinan Cultural Centre (China)... And among our on going projects, the courthouse of Saint-Laurent-du-Maroni in French Guiana and the Oman Cultural complex in Muscat.

References :



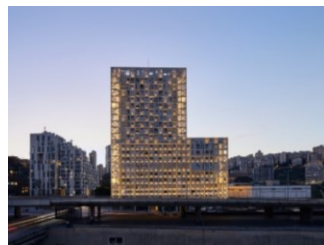
Courthouse, Saint-Laurent-du-Maroni



National Theatre of Bahrain, Al-Manama



Oman Cultural Complex, Muscat



Mixed used tower, Beirut

arte

ARTE CHARPENTIER

Paris
France

Mr. Jérôme LE GALL

Associate Architect
Architecture Director

+33(0)1 55 04 13 14

+33(0)6 84 99 28 56

j.legall@arte-charpentier.com

Mrs. Nahla JAJO-LEGRAND

Regional Director
Middle East & Africa

+33(0)1 55 04 13 08

+33(0)6 22 62 15 39

n.jajolegrand@arte-charpentier.com

www.arte-charpentier.com/en/

Arte Charpentier, a global agency

Architecture.

Research.

Technique.

Environment.

We are a 360° agency, led by women and men capable of providing all the expertise, energy and enthusiasm necessary for the design and realization of generous and animated spaces, from the simplest to the most complex. From the railings to the 5th facade, from the building to the territory.

Experts in cultural equipment and heritage architecture, the tertiary sector, facilities, retail, housing and project management.

We are architects, urban planners, interior architects and designers, landscapers, researchers and doctoral students. Support by a team of IT specialists, BIM managers, graphic designers, financial managers, quality specialists, lawyers, communicators and assistants.

Founded in 1969, Arte Charpentier has more than 120 employees from 18 different nationalities, in Paris, Lyon, Shanghai and Wuhan.



McArthurGlen Luxury Outlet Giverny, France



Campus Ducasse Paris, France



chaixetmorel is an architectural studio founded in 1983 by Philippe Chaix and Jean-Paul Morel. A new directorate composed of Rémi Lichnerowicz, Walter Grasmug, Jan Horst and Pierre Cornil, with diverse and international profiles, confirms the desire for openness and development. Project leaders, architects and administrative managers complete this group of around 35 people of various nationalities.

CHAIX ET MOREL

Paris
France

Berlin
Germany

Mr. Jan HORST

Architect, Partner:
jan.horst@chaixetmorel.com
+33(0)1 43 70 69 24
+33 (0)6 16 06 01 28

www.chaixetmorel.com

The last 40 years have seen the development of a culture within the agency based on two complementary facets : public sector architecture (Zénith concert halls, theatres, museums, stadiums and educational buildings) and private sector architecture (office blocks, industrial buildings, patrimonial renovations). The Atelier is currently expanding abroad thanks to important projects in Europe, especially in German speaking countries.

The Atelier proposes an architecture that places emphasis on restrained elegance, a refined style and a subtle approach to lighting. Every project is studied from a fresh point of view, with each scheme calling for a specific response that avoids any preconceived architectural or aesthetic ideas. It is this spirit that has allowed the Atelier to meet the challenge of all types of programmes and continue the architectural adventure in a manner that constantly stresses the importance of innovation.

Office buildings : SKY56 tower in Lyon, Research campus for Michelin, Engie campus, ThyssenKrupp Headquarters in Essen

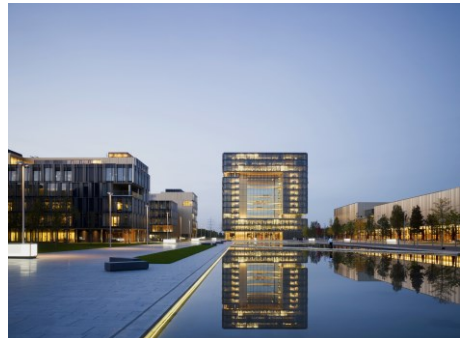
Cultural Equipment : Zénith of Paris, Théâtre Sénart, Saint-Romain-en-Gal Museum

Sport Equipment : Modernization of Roland-Garros Stadium and Geoffroy Guichard Stadium

Patrimonial renovations : Saint-Laurent Headquarters in Paris, Urban tech Republic in Berlin, Petit Palais Museum in Paris, Museum of European History in Brussels



Campus Engie, Garenne-la-Colombe, France



Campus ThyssenKrupp, Essen, Germany



AW² is an international architecture and design agency based in Paris run by Reda Amalou and Stéphanie Ledoux. Both partners take active roles in the design process and are personally involved in all the projects that the firm produces.

In 2022, AW² opened an office in the centre of Geneva. This branch is now the local representation of the Paris agency in Switzerland.

With projects in 40 different countries, the studio has an international reputation for high-end design. The studio covers all project typologies including hospitality, education, commercial and residential.

AW² has received several awards over the years including the MIPIM Best Hotel Award for the Six Senses Con Dao resort, the Build Architecture Award for Best International Architecture & Design Studio – Paris, and four nominations for the AFEX Grand Prize in French Overseas Architecture for Six Senses Con Dao in Vietnam, the Lycée Français in Amman, Jordan, Ani Private Resort & Art Academy in Sri Lanka and Kasiya Papagayo eco-lodge in Costa Rica.

AW2

Paris
France
+33 1 45 87 75 75
aw2@aw2.com

Mr. Reda AMALOU
Founder & Partner
Architect
ovasiljeva@aw2.com
+ 33 6 16 11 76 76

www.aw2.com



Banyan Tree AlUla tented resort, AlUla, Kingdom of Saudi Arabia



5 resort Silversands, St. George's, Grenada*

Coldefy

COLDEFY

Lille & Paris
France

Shanghai
China

Mr. Zoltan NEVILLE

Partner Architect, International
Projects

zneville@coldefy.fr
+33 6 71 39 46 74

www.coldefy.fr

ICONIC CULTURAL, PUBLIC, AND COMMERCIAL MIXED-USE PROJECTS



Introduction :

Coldefy is an international architecture and urbanism practice that maintains offices in Lille, Paris, and Shanghai. With completed and ongoing projects around the world, the practice engages in private and public projects at all scales.

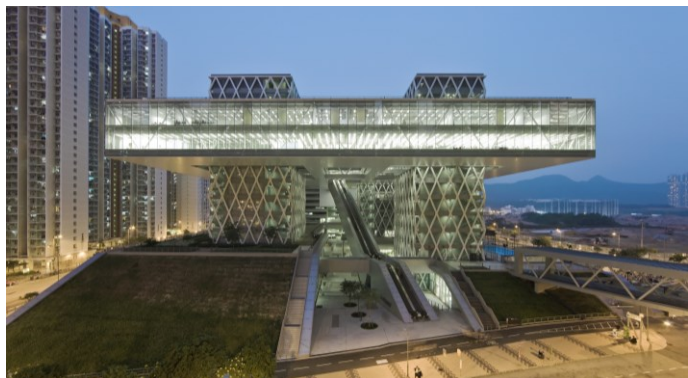
Coldefy brings a new type of pragmatism through its projects. Convinced that buildings influence our behavior, just as they shape our cities, Coldefy bases its work on social and sensory experience at the very core of and beyond the matters of aesthetics.

Description of your expertise :

- Architecture (Public, Private, and Mixed-use Commercial)
- Urban Planning and Master Planning
- Interior Design (High-end commercial and Hospitality)
- Branding, Graphic Design & Signage
- Narrative visualization (3D Rendering and Animation)
- Architecture Models

References:

- French Pavilion Osaka World Expo 2025 (JP)
- European Parliament Brussels (BE)
- Hong Kong Design Institute (CN)
- Bao'an District Public Art Center, Shenzhen (CN)
- Inzovu Terraces Mixed-Use (RW)
- National Pulse Memorial and Museum, Orlando (USA)
- Fondation de Chine Student Center (FR)
- "Wonder Building" Offices (FR)





Introduction :

Architecture, landscape and urban planners

Description of your expertise :

Invent, Transform, Impact

Located in Paris and Marseille, the international architecture, urban planning and landscape design agency Rougerie+Tangram creates innovative and emblematic facilities throughout the world. It is driven by the desire to carry high the values of progress and innovation, ecology, collective intelligence and the spirit of biomimicry to build a sustainable future through projects on land, under the sea and in space.

Its creed: to produce an architecture of daring and surprise, always inspired by living beings, in a spirit of harmony between beings and nature, in order to Invent, Transform, Impact.

Invent solutions, invent practices, invent possibilities, Transform ways of thinking, transform uses, transform society, Impact the future, impact the course of things, impact the system.

The diversity of the agency's achievements, including cultural and scientific projects, museums, aquariums, sports facilities, airports, university buildings, public-access buildings, housing, etc., reveals the wealth of contemporary creativity that characterises it.

References:

Museums and cultural and scientific centers of the sea
Marinas and coastal developments, maritime station
Sports and leisure equipment
Hotels and restaurants

ROUGERIE + TANGRAM

Paris & Marseille
France

Mr. JACQUES ROUGERIE

Associate Architecte
rougerie@rougerie.com
+ 33 6 61 53 86 38

www.rougerie-tangram.com/



Urbanization within the sea Monaco



LOCAL

LOCAL

Paris
France

Matthieu Boustany
Architect / Co-founder
mboustany@locallll.com
+33 (0) 1 40 38 76 13
+33 (0) 6 78 45 37 11

www.locallll.com

LOCAL is an architecture and urbanism firm based between Paris, Brussels, and Bergen. We strive to redefine the fabric of our surroundings through imaginative and cutting-edge design. Operating across all scales and locations, we harness collective expertise through extensive research to deliver unique solutions and provide quality environments for residents.

We are forward thinking, experimental and pragmatic.

Focus #1 : **Modular and prefabricated buildings.**

LOCAL is engaged in producing more efficient and sustainable cities using prefabrication and modularity as core principles of our projects. The process empowers us to maintain superior quality control, enhance construction phase comfort, considerably reduce the activities on-site, and maintain a transparent view of project cost dynamics.

We shape the spaces for future communities, around rational and aesthetic constructive systems.

Focus #2: **High-End experiences.**

LOCAL specializes in custom-made solutions for high-end projects, crafting contemporary spaces that elevate the art of design. Our meticulous attention to detail and choice of materials ensures a distinct and immersive customer experience. We collaborate with brands and corporations to translate their visions into tangible spaces and visual representations.

We simplify intricate situations, providing clients with clear solutions and a step-by-step approach to achieving their goals.



Tripoli



MAISON ÉDOUARD FRANÇOIS

Paris
France

Mr. Edouard François
CEO
ef@mef.fr

www.edouardfrancois.com



Introduction : Maison Edouard François is an esteemed architectural firm founded by the distinguished architect Edouard François. Recognized for its transformative designs, the agency masterfully merges the boundaries between natural landscapes and built environments. With a philosophy deeply rooted in sustainability and contextual awareness, Maison Edouard François has established itself as a trailblazer in contemporary architectural thought and practice. Over the years, the firm's groundbreaking projects have not only captured the imagination of the architectural community but have also played an instrumental role in reshaping urban and rural landscapes

Description of your expertise : Maison Edouard François places at the heart of its project development 4 themes:

- The context: every location has a history, culture, and essence that can be explored and enhanced through architecture.
- The uses: architecture isn't just about aesthetics; it should foremost serve its inhabitants, meet their needs, and improve their quality of life.
- The materials: Materials are never inconsequential. They tell a story, evoke emotions, and embed the building in tangible longevity.
- Biodiversity: integrating nature and biodiversity into designs is not just an aesthetic or ecological choice but also a way to rethink the relationship between humans and their environment.

References:

Cheval Blanc, Paris, 2021, rehabilitation of the historic building into a palace for LVMH

The Nest, Luxembourg, 2025, Office building

Bordeaux Saint Jean, Bordeaux, 2025, Mixed project: shops, offices, housing, hotels, leisure,

Campus Soprema, Strasbourg, 2022, Soprema head office, offices, fitness, nursery, restaurant

Brazza, Bordeaux, 2022, 176 housing units, capable volumes, artisan premises and urban agriculture

Sky & Garden, Asnières-sur-Seine, 2023, 273 housing units for purchase, elementary school

Giverny Oasis, Limasol, Cyprus, 2021, 50m tower, 20 luxury apartments

Gamaro Tower, Sao Paolo, Brazil, 2021, Tower of 42 floors of housing

Club Med 4 and 5 Tridents, Al Diana, Sénégal

Le Ray, Nice, 2021, 338 housing units, shops and landscaping

Tour Panache, Grenoble 2019, 50m tower, 42 accommodations

Les Jardins d'Anfa, Casablanca, Morocco, 2019, 3 residential towers, 1 office tower

Les Collines de Honfleur, Honfleur, 2017, luxury outlet shopping center

M6B2 Biodiversity Tower Paris, 2016, 50m tower, 232 housing units, nursery, shops,

Fouquet's Barrière Hotel, Paris, 2006



Giverny Oasis



MICHEL RÉMON & ASSOCIÉS

Paris
France

Alexis PEYER

Partner Architect
a.peyer@remon.fr
+33 (0)6 47 01 97 83
+33 (0)1 45 86 11 55

www.michelremon.com/en

Introduction :

The MICHEL RÉMON & ASSOCIÉS architectural practice, with a **multidisciplinary team** and, after **39 years of constant development**, counts **100 outstanding buildings references** for complex programs. Architects and directors **Michel RÉMON and Alexis PEYER** carry out their projects most often as architectural consultants. Consulted for competitions, public-private partnerships and prestigious design-and-build projects, the architectural practice divides his time between public and private commissions, in **France** but also **internationally** (Morocco, Belgium...).

Description of your expertise :

With the force of this dynamism, the MICHEL RÉMON & ASSOCIÉS architectural practice has been able to build its reputation among the major French architectural firms, while maintaining a demanding positioning for large-scale projects and cutting-edge topics. The teams and a structured organization are always ready to respond to the specificities of the many areas tackled. The architectural practice thus carries out the entire production chain of projects: design management, monitoring of works, coordination of communication between the client, the project manager and the other partners in the actual construction work. To the reliability of his teams, MICHEL RÉMON & ASSOCIÉS adds methods and procedures established and approved by all the partners: **BIM digital models** since 2013 and **ISO 9001** since 2009.

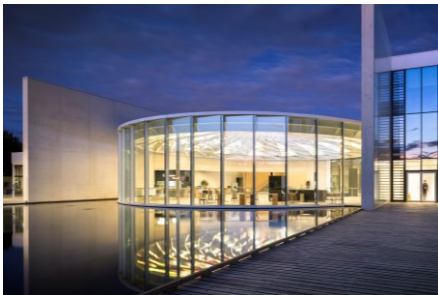
References:



University Clinics of Saint-Luc | Brussels, Belgium



Smart Health Care City | Ben Guérir, Morocco



R&D Headquarters | Air Liquide | Paris-Saclay, France



Torpedo Stadium | Moscow, Russia



ARCHITECTURE AND INTERIOR DESIGN : MIXED USE / CULTURAL / OFFICE BUILDINGS URBAN DESIGN : ICONIC PUBLIC SPACE

Experience the ORO difference, where luxury meets local authenticity.

Mission ORO Group blends architectural, infrastructural, and landscape design to create luxury environments. We prioritize local resources for contextually rich spaces.

Vision We envision spaces that narrate their own stories, with designs that captivate and uplift. Every site holds potential for extraordinary living experiences.

Services We specialize in hotel, housing, and public space projects, prioritizing functionality and aesthetics.

Highlight: Saudi Arabia In Saudi Arabia, we excel at designing environments that thrive in extreme climates, harmonizing with the landscape for optimal living conditions.

We are proud to announce the **LEG**, a cutting-edge landscape engineering initiative dedicated to meeting Saudi Arabia's imperative low-carbon goals. We specialize in innovative solutions for extreme climate adaptation and overcoming water scarcity challenges.

Ongoing references for landscape design in Saudi Arabia.

- **Amaala 1, Ocean resort, Red Sea Global (2022)**
- **Amaala 2 : Wellness resort, Red Sea Global (2022)**
- **Blackdesert resort, Red Sea Global (2023)**

ORO

Paris & Corsica
France

Mr. Marguerie Alexandre
CEO
contact@oro.archi
+33 6 76 78 39 61

Mr. Buresi Gautier
CEO

www.oro.archi
www.landscape.designgro
up.com



MO- Velaa private island
Nonuu atol, Maldives



MO-Zuri Zanzibar, Zanzibar

PCA-STREAM

ARCHITECTURE AND INTERIOR DESIGN : MIXED USE / CULTURAL / OFFICE BUILDINGS URBAN DESIGN : ICONIC PUBLIC SPACE



PCA-STREAM

Paris
France

**Mr. Philippe
CHIAMBARETTA**
Founder, Managing
Director
pchiambaretta@pca-
stream.com
+33611682572

Mr. Dr Étienne RIOT
Director – Research and
Innovation
eriot@pca-stream.com
+33619084277

www.pca-stream.com

Introduction

Founded and directed by Philippe Chiambaretta since 2000, PCA-STREAM works on all scales. Offices, commercial spaces, museums, hotels, towers, mixed-use districts, PCA-STREAM is interested in any type of programme as long as there is a desire to reinvent elements of outdated codes. Since its creation, PCA-STREAM has built nearly 280,000m² and 360,000m² more is already planned for the next two years alone. Our team of 100 people mixes various expertises : architects; designers, urban planners, landscape designers, 3D designers, researchers and editors.

Description of your expertise :

-Architecture : *New Build and Renovation, Mixed Use buildings
Heritage, Office buildings, Cultural Venues*
Interior Design, Urban Design, Applied Research.



CHAMPS-ELYSEES AVENUE
Strategic Urban Design



THE LINK - PARIS LA DEFENSE
High-rise new gen



EVIAN RESORT – SOURCE VIVE
Classical Music Venue



CENTRE POMPIDOU
Preservation and exhibition site



RICHEZ ASSOCIÉS

Paris & Corsica
France

Thomas Richez

Président

thomas.richez@richezassociés.com

+33 (0)6 09 88 07 11

www.richezassociés.com

- Over 150 architects, urban designers and landscape architects
- 35 years of experience in France and worldwide, on the 5 continents
- 4 areas of excellence: architecture, masterplanning, landscape and streetscape, with world class expertise on mobility and health projects
- Paris + Toulouse + Kuala Lumpur

Richez_Associés global approach, a guarantee for a sustainable design

Richez_Associés has completed award winning buildings, neighborhoods masterplans and public spaces, on all continents, and has gained recognition of its world class expertise on mobility projects, like tramways and metros. Teaming up with Pargade, an expert in health projects, they are able to extend their ability to design user friendly and iconic complex projects to this sector.



Ardoines office Campus



Jinan Opera

S&AA



Coherence is born of diversity. S&AA signs its projects with a resolutely contemporary aesthetic approach. Each project is different according to the site and value local resources, having a virtuous and ecological approach. S&AA prioritizes community harmony and reduces the environmental impact of its buildings.

S&AA – PATRICK SCHWEITZER & ASSOCIÉS

Strasbourg & Paris
France

Kigali
Rwanda

Patrick Schweitzer
Architect
patrick.schweitzer@schweitzer-associes.com
+33 388 223 223

Jihène Derouiche
Architect
jihene.derouiche@schweitzer-associes.com
+33 3 69 09 44 02

www.schweitzer-associes.com



IRCAD Africa – Kigali – Rwanda



IHU – Strasbourg – France



FAED School of Architecture – Kigali – Rwanda



ENA Ecole Nationale d'Administration – Strasbourg – France





STELLA AMAE

STELLA AMAE

Paris
France

Mr. Alexandre Stella
Architecte & Founder Head
alexandre@stella-amae.com
+33 760 58 34 41
+33 674 26 91 24

www.stella-amae.com

Introduction :

Stella Amae is a French architecture firm based in Paris and Barcelona, Spain. Our focus centers on architectural innovation and strategic metropolitan projects. Co-founded by Alexandre Stella from France and Ryuta Amae from Japan, our team comprises 20 creative individuals dedicated to exploring the future of architecture, environmental considerations, urban planning, interior design, art, and landscape architecture.

Mains activities:

We are committed to delivering innovative, comprehensive architectural solutions, with a wealth of experience in overseeing significant international projects. We are attuned to the pulses of change that will resonate through the world of tomorrow and guide the course of our future civilizations.

Since 2020, we have been actively involved in designing cultural projects and urban strategies aimed at realizing Vision 2030 in Saudi Arabia.

References:

- 1/ Welcoming Gateways Competition – Royal Commission of Riyadh City - KSA
- 2/ Shushah Island Resort – Neom - Red Sea – KSA
- 3/ Altitude - Hijaz Mountains Urban development – Public Investment Found - KSA
- 4/ Diriyah Gate 2 – Creative and Innovation district – Riyadh -KSA
- 5/ Wadi Al Fann Design Competition – Royal Commision of AIUla
- 6/ Imam Mohammad Ibn Saud Grand Mosque – DGCL - Diriyah Gate II, KSA
- 7/ Aramco Prosperity Zone Pavillion – Aramco - KSA
- 7/ Wakayama Integrated resort – Groupe Barrière – Japan
- 8/ Lingang Museum - Shanghai - China.
- 9/ Tour Montparnasse High-rise Competition-Paris-France
- 10/ Alicante Convention Center, Valencia, Spain
- 11/ Carthage Archaeological Museum – Carthage – Tunisia
- 12/Reinventing Paris Mixed Use Buildings – Paris - France



Palacio de Congresos de Alicante
Spain



Metropolitan Square mixed-use building, Lille
France



Paris • Lyon • Alpes • Bahrain
Architecture and Engineering

UNANIME

Paris, Lyon & Alpes
France

Manama
Kingdom of Bahrain

Mr. Pierre Sfeir
Managing Partner
p.sfeir@unanime.fr
0097337221339

Mr. Abdulatif Yousef
Managing Partner
a.yousef@unanime.fr
0097335171175

www.unanime.fr

Unanime is a leading international consultancy office with more than 30 years of experience and over 100 collaborators around the world. We have offices in France, Tunisia and in Bahrain since 2011.

We are a group of architects, Engineers and Urban planners specialized in highly technical buildings and urban planning such as Hospitals (clusters), research centers, laboratories, visitors centers, crisis management centers, logistics and factories. We integrated passive sustainable design in all of our projects and have achieved LEED and HQE certifications for most of our projects.

References:

- Prince Sultan Cardiology hospital MOD Riyadh
- Neom primary healthcare center Neom
- Kims rehabilitation hospital Manama
- Mental health wellness center Manama
- Al Barrai rehabilitation hospital Dubai
- Erada rehabilitation center Dubai
- Sud scene et marne rehabilitation center Paris
- Marine biology reasearch center Jubail
- Qatar foundation Tech4 laboratories Doha
- Crisis Management Center Al Madina
- Crisis Management center strategy Riyadh
- UN Cancer research center Lyon
- Henessy Visitors center Cognac
- SNCF technical buildings Lyon
- Wadi al Sail mall Manama
- Mazaya logistic building Manama



ZUO

Paris
France

Mr. Bassel ZURAYK
Architect / International
Development Director
bassel.zurayk@zuo-
architecture.com
+ 33 6 41 01 11 16



ZUO : An award-winning and key player in the field of architecture and urban planning

Expertise : In regard to the projects it studies, ZUO is faced with a wide variety of scales of construction. Whether our projects reach territorial dimensions, or focus on the manufacture of a simple piece of furniture, it is “accuracy” that must be the measure of all things. Scale is defined by a relation to the human; an understanding of this definition in its mathematical and relational sense is a touchstone of the accuracy we seek. Design approaches developed by, for and in function of the human individual constitute a true creative path, an avenue that we explore and a high road whose elevated views protect us from both formalism and egocentricity. The importance we attach to context is evident. In reality, context provides both the form and the content of our projects. In the theoretical debate between hyperurbanism and sub-urbanism, we find ourselves in an uncomfortable position. Due to the sheer size of our projects, we are involved in the construction of megastructures; but, at the same time, for us, the architecture of these gigantic edifices can only be born of the context which, strictly speaking, serves as their matrix. Yet, in all case, the process we apply is a simple one – before us, there is the landscape, even if it is an exclusively urban one; after us, the landscape remains, regardless of whether our projects scratch, lacerate, flatter, or magnify it. ZUO is a pioneer in France in the field of BIM (Building Information Modelling). A member of the BIM France association, ZUO has been working since 2004 on Revit software and is one of the country’s users of reference. All our projects are initially developed in the form of digital layouts, with levels of data integration up to and including complete BIM, depending on the wishes of our clients. Attention to environmental issues is a central aspect of the working methods developed by the firm. Before being a normative affair, environmental quality derives naturally from a swathe of good practices based on experience. It is also, of course, associated with a knowledge of various environmental certifications applied in the building industry and used by the firm’s architects on a daily basis: Certivea, Breeam, Minergie, Leed and Well.

References : ZUO is a design, architecture and urbanism firm specializing in complex, multi-functional projects. ZUO is a key actor in the sector.



BEAC Headquarters, Equatorial Guinea



Mutuelle
des Architectes
Français
assurances

VOUS AVEZ L'AUDACE. NOUS AVONS L'ASSURANCE.



FRANCE'S LEADING INSURER FOR ARCHITECTS

MAF – MUTUELLE DES ARCHITECTES FRANÇAIS

Paris
France

Mr. Vincent MALANDAIN
Chief Executive Officer
vincent.malandain@maf.fr
+33 609183516

Mr. Gilles CALOJARO
International Insurance
Manager
gilles.caloiaro@maf.fr
+33 625931962

www.maf.fr

Introduction : MAF - the French number one insurer for Architects

Description of your expertise : Mutual insurance on a human scale, MAF ensures the professional liabilities of architects and engineers. It both accompanies them in their mission and defends their profession. The mutual insures today more than 90 % of architects in France and has a balance sheet of 4.5 billions euros.

It is seen as a reference by the French Ministry of Culture, the Order of Architects, the Academie d'Architecture as well as the Architect's Union.

The solvency and independence of MAF is the best guarantee of the members' defense of interests. The board members, who are also practicing architects, are involved on a voluntary basis in the life of the mutual insurance company.

Through its subsidiary EUROMAF, created in 2000, MAF extends its action to various countries in Europe.

References: Member of AFEX, MAF provides professional liability insurance to more than 300 French Architects and engineers on their building projects around the world.

In Saudi Arabia, MAF has provided professional liability insurance to architects on all types of projects, from a Balmain luxury shop in Jeddah to the Royal Palace Al Salam in Riyadh.



STUDIO FALAJ

Dubai
UAE

Montpellier
France

Ms. Ludivine BARUTON

Founder
Landscape architect
DPLG
lbaruton@studiofalaj.com
+971585117383
+33783736157

www.studiofalaj.com

[FALAJ]: name of Oman Oasis irrigation channels.

Like these channels, we feed each site with our creativity and expertise to create beautiful and multisensorial spaces with respect for wildlife and for people enjoyment.

A HOLISTIC APPROACH:

It always starts with a wish to change a site's identity for public reasons.

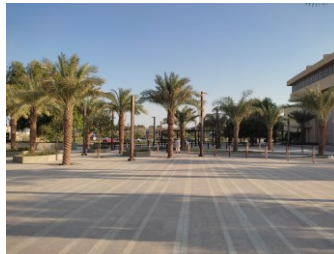
At Studio Falaj, we help making these changes in a well-thought manner: Comprehension of the client's brief followed by the analysis of the site's components (History, topography, vegetation, usages ...); conceptual designs incorporating these parameters with an artistic and sensitive input and the best solution detailed and followed up to completion.

"HAUTE-COUTURE" PROJECTS:

Rich of work and life experiences in KSA, UAE, Bahrain, Europe and Morocco, our practice's strength lays in territories and their ecology understanding, human psychology and cultures, knowledge in material, endemic plants and artistic vision to bring effortless technical solutions; creating chic, comfortable and well-crafted environments.

Two projects completed in KFUPM,
Dammam, KSA:

Ladies'school



Al Rabee Park





TERRELL

Consulting Engineers since 1982

TERRELL GROUP

Paris & Toulouse
France

London
UK

Beirut
Lebanon

Peter TERRELL

Founder
+33 6 80 75 08 80
peter@terrellgroup.net

John HANLON

Chairman
+33 6 13 10 44 06
j.hanlon@terrellgroup.net

Ziad DARGHAM

Managing Director
+33 6 20 39 39 54
z.dargham@terrellgroup.net



www.terrellgroup.net

Founded in 1982, TERRELL is a leading multi-disciplinary engineering consultancy recognized for its technical expertise producing innovative yet practical design solutions.

With offices in France, the UK and Middle East, and over 120 specialist engineers & skilled professionals, we offer our expertise in structure, building services, façade/envelope and sustainability.

Our engineering

- Uses environmental quality as an incentive & objective.
- Provides innovative, optimised solutions.
- Covers private and public sector projects of varying scales & complexity.
- Delivers passive solutions & systems for low energy consumption.
- Balances architectural requirements with budgetary constraints.
- Achieves optimum buildability.
- Uses BIM as central to our cutting-edge design approach & informed production.

Structural Engineering - Civil Engineering Building Services - Sustainability - Façade & Envelope



VILLA HEGRA CLUSTER, Al Ula, KSA
Arts and culture landmark in Al Ula.



FLYING WHALES, Bordeaux, France
Factory for production & testing of a large-capacity rigid airship.
Client : Flying Whales
TERRELL & GAAMMA



SETEC

Paris
France

Mr. Juan Carlos Romero
International Development
Deputy Director
juan-carlos.romero@setec.com
+33 (0)6 07 81 22 98

www.batiment.setec.fr

BUILDING ENGINEERING



Introduction : Established in 1967, setec bâtiment is a renowned partner specializing in building engineering. We have designed and constructed over 10 million square meters of projects where technical and architectural added value is a key factor, regardless of the project size.

A subsidiary of setec group, setec bâtiment is part of one of the leading French companies of international scope, with 3,000 employees spread across approximately forty subsidiaries, and a turnover of 460 million euros in 2022.

Description of your expertise: We take pride in our ability to transform architectural visions into tangible, efficient, and resilient structures. Our dedication to quality, innovation, and sustainability, consistently delivers outstanding results, whether it is design studies, project management or client/owner's assistance.

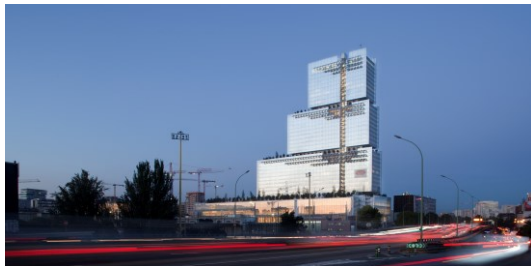
References: Our diverse portfolio includes iconic projects such as:

- **Cultural Centers:** Louis Vuitton Foundation (FR), Albert Kahn Museum (FR), Louvre Abu Dhabi (AE).
- **Sustainable Development:** King Salman Park (SA), AIUla MP1 (SA), Issy Mixed-Used Campus (FR)
- **Transportation Hubs:** Grand Paris Express Metro (FR), Riyadh Metro lines 4, 5, 6 depots (SA), Santiago Airport (CL)
- **Learning Facilities:** Jussieu Campus, Sorbonne University (FR), Nelson Mandela High School (FR).
- **Healthcare:** Lens Hospital (FR).
- **Institutional Buildings:** Paris Courthouse (FR)
- **High-Rise:** Montparnasse Tower (FR)
- **Hospitality:** JW Marriott Bahrain (BH), Rotana Hotel Amman (JO)

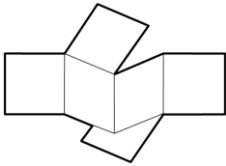
Among many others.



Louis Vuitton Foundation, Paris France



Paris Courthouse, Paris, France



ALL TYPES OF FACADES NEW CONSTRUCTION AND RENOVATION

We are an experienced design firm that develops façades that fit within every specific cultural and climate environment.

We have been designing façades for iconic buildings in Europe since 1989 and for large-scale projects in Asia since 2011. We work with great architects including Pritzker price architects. International universities support our R&D programs, and our expertise is also applicable to existing buildings.

VS-A

Lille
France

Mrs Nirvana AL DIB

Business developer /
Architect & Project manager
n.aldib@vs-a.eu
+ 33 7 81 40 03 72

www.vs-a.group

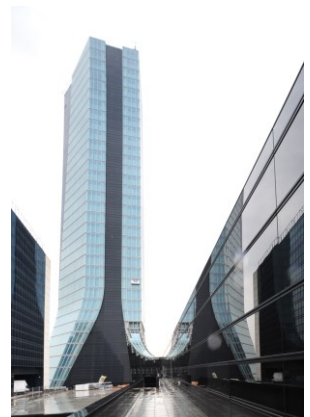
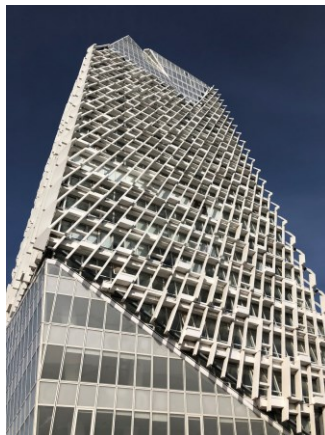
We design in collaboration with international architecture firms, or as architects as OP-EN. We always look for innovative architectural and technical solutions based on common sense and adapted to local cultures.

We engineer facades with comfort and sustainability as key concerns including zero-energy reduced carbon footprint, minimal upkeep or fit to local climate conditions. We master such topics as complex geometry, specific safety requirements, high-rise facades with all sorts of materials.

We develop cost-effective facades complying with local codes. They can be built by local or international contractors, using locally sourced materials and products. Our design process is fully independent from suppliers to ensure best technical and financial value.

References :

Qatar Foundation and National Library – Doha, Qatar
Casablanca Finance City Tower – Casablanca, Morocco
Maroclear Headquarter – Casablanca, Morocco
CMA CGM Tower - Marseille, France
Alcide De Gasperi building – Luxemburg, Luxemburg
IGN and Meteo France Geosciences Center – Paris, France
Qinghe Railway Station – Beijing, China
Tencent Headquarters Beijing – Beijing, China
Vanke Binhai Cloud Center – Shenzhen, China





BLACHERE ILLUMINATION

Dubai
UAE

Mr. Johan HUGUES
CEO

johan@blachere-illumination.com
+33 609 57 75 08

Mr. Mehmet SOLTAY

GM Middle East
m.soltay@blachere-illumination.ae
+971 50 506 9231

<https://blachere-illumination.com/>

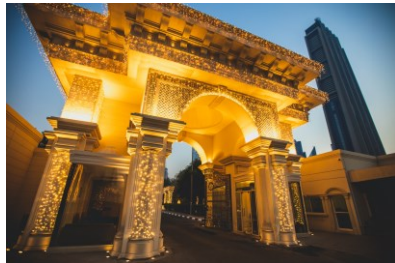
Introduction: Blachere Illumination is the original and largest illumination provider with a global network of 28 subsidiaries, 5 factories, 50 years of experience, and 400 employees around the world.

Description of your expertise: Blachere Illumination's expertise is illuminations, festive lights & bespoke décors.

References:

- The Eiffel Tower, Paris, France
- L'Avenue des Champs-Élysées, France
- Westfield, Lyon & Paris, France.
- Royal Wedding 2019 at the Royal Palace, Dubai, UAE.
- Yas Mall, Aldar Properties, Abu Dhabi, UAE.
- The Point, Nakheel Communities, Dubai, UAE.
- Bluewaters, JBR Dubai Holding, Dubai, UAE.
- Dubai Shopping Festival, Dubai Economy and Tourism, Dubai, UAE.
- The Hudson Yards, New York, USA.
- Trafford Centre, Manchester, UK.
- Dior
- Fendi
- ...

Royal Wedding 2019, Dubai, UAE



Yas Mall, 2022, Abu Dhabi, UAE



BOA

LIGHT STUDIO



LIGHTING DESIGN

BOA Light Studio designs lighting atmospheres.

We create nightscapes: tales of light that make for a memorable and poetic nighttime experience

Sectors: Urban landscapes, Facades, Architecture, Transports, High end light sculptures, Design.

BOA LIGHT STUDIO

Vincennes
France

Mr. Jean-Marie PRIOL
Artistic Director Associate
jmp@boa.fr
+33 6 64 70 48 76

Mr. Nedir BENKHELIFA
Artistic Director Associate
nb@boa.fr
+33 6 15 28 92 05

www.boa.fr





ECLATEC

G.H.M - ECLATEC

Paris
France

Tinstraat
Netherlands

Mr. Frederic MINCK
Export Manager
frederic.minck@ghm-eclatec.fr
+33 (0) 3 25 55 23 03
+33 (0) 608 50 55 19

www.ghm-eclatec.com



GHM-ECLATEC makes its contribution to the Sustainable City with an original signature, born from the successful association of Light and Metal.

Our proposals feed on the same DNA, produced from a unique combination of two competences :

- the transformation of materials by GHM
- the mastery of lighting by ECLATEC

Since it was founded in 1837, GHM-ECLATEC has specialized in designing luminaires and street lighting equipment.

Life, Cities, Nature inspire our sustainable lighting solutions.

SUNPOLE-C is a reliable and efficient solar offer, made in Europe. It features :

- a high-performance LED luminaire that can be used in a large number of applications thanks to its wide range of light distributions,
- a factory-programmable time-controlled dimming function for optimum lighting adapted to the use of the location.
- a high-efficiency battery and a photovoltaic panel.
- a personalized implementation study conducted directly by ECLATEC, which is used to specify the photometric specifications and the operating autonomy.

WIZARD provides management of all your public lighting network. It makes it possible to improve the quality and reliability of outdoor lighting and to reduce operating and maintenance costs. Its operation is modular and scalable, from a single lighting point to local networks, up to cubicle-based management.



Mansard hotel, Riyadh



The Zone, Riyadh



Introduction : Selux designs, develops and produces outdoor lighting solutions to meet the needs of tomorrow's cities.

Description of your expertise :

Light for generations. Functional and durable. The timeless design of our lights reflects this attitude. The new Line lighting family therefore adopts a radical approach to sustainability: a timeless and minimalist design, a long lifespan, reduced use of materials and high lighting quality. With Line, Selux is revolutionizing public lighting: various functions are combined in an extremely reduced design, which creates new clarity in the urban landscape.

To meet different applications, four module sizes are available with light fluxes adapted accordingly. The modules are equipped with innovative reflector systems with gold, silver or black micro-facets with a distribution of light designed to illuminate streets, paths, squares and parks.

SELUX

Miribel
France

Mrs. Sarah Debaene
Regional Director Paris –
Ile de France
sarah.debaene@selux.fr
+33 630 21 43 36

Mr. Michel Beziat
Specifying Manager –
France / Sales Manager -
Roman Switzerland – Spain
– Morocco – Senegal
michel.beziat@selux.fr
+33 675 39 15 91

www.selux.com

References : Martil (Morocco), The Academy of the Kingdom of Morocco in Rabat (Morocco), Rabat-Agdal train station (Morocco), Antalya (Turkey), Dhahran (Saudi Arabia), Old Port (Marseille, France), Place de la République (Paris, France)





PLÂTRE.COM

Soisy sous Montmorency
France

Mr. POTIN Marc
CEO

marc.potin@platre.com
+ 33 (0)6 60 74 06 58

Mr. CALVIGNAC Thierry

Technical Consultant
thierry.calvignac@platre.com
+ 971 50 458 18 58

www.platrecom.org
www.viejot.com

HERITAGE/ ICONIC PROJECTS PLASTERS

French manufacturer of made-to-measure traditional high-end plasters

Expertise :

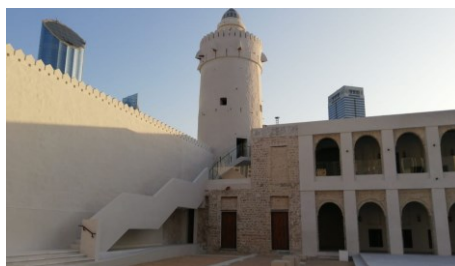
Heritage buildings : analysis of original mortars, manufacturing of ready-mix counter-types, own calcining of high-temperature exterior gypsum plaster, expertise in gypsum, lime and clay plasters, including Stuc Pierre, Juss, Sarooj, floor plasters,

Iconic projects : conception and manufacturing of decorative « stucs » (render), tailor-made for each project (colour, texture, material, feeling, ...)

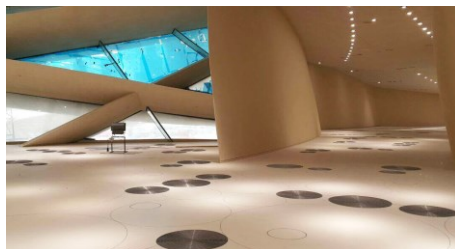
Sustainable construction : geo-sourced mortar and plaster specifically designed for bio-sourced material (wood, straw, hemp, ...) : moisture management, fire protection.

References :

Château de Versailles
Pinault Foundation (Bourse du Commerce) - Paris
Louis Vuitton Foundation – Paris
UAE Pavillon – Milano
Musée du Louvre Paris / Louvre Museum Abu Dhabi
Qasr El Hosn – Abu Dhabi
Qatar National Museum – Doha
Six Senses Southern Dune – The Red Sea



Qasr Al Hosn, Abu Dhabi, UAE



National Museum, Doha, Qatar

IN PARTNERSHIP WITH



CONTACTS

PARIS

Madeleine HOUBART
AFEX Architectes Français à l'export
afex@afex.com
Tél : +33 (0)6 80 08 34 05

Tiphaine BUGNO
Architecture Project Manager
Tiphaine.bugno@businessfrance.fr
Mob.: +33 (0)1 40 73 31 74

RIYAD

Alexandre D'ESPINOSE
Senior Trade Advisor
Business France - Riyadh Office
alexandre.despinose@businessfrance.fr
Tél.: +966 55 843 4101

Christelle EL KHOURY
Senior Trade Advisor
Business France - Riyadh Office
christelle.elkhoury@businessfrance.fr
Tél.: +966 50 859 8814

Yanis MARSA
Trade Advisor
Business France - Riyadh Office
alexandre.despinose@businessfrance.fr
Tél.: +966 50 998 2562

